



BECROP

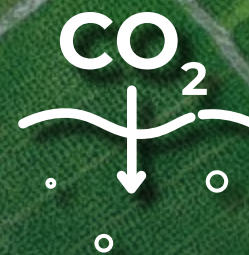
BY BIOME MAKERS

RATE

Empowering Sustainable Land

Empowering Sustainable Land

Sustainable Farming
Sustainable Food
Sustainable Economy



BeCrop Rate Mission

Measuring human intervention on agriculture is the key to empowering sustainable food production.

Farmers and food producers have made ambitious commitments to sustainable farming and these efforts need to be rewarded. However, they have not had a reliable metric that is scientifically proven to measure their impact - until now!

BeCrop Rate provides a metric system that directly enables its user to demonstrate and verify their sustainability.

Farmers and operators now have the technology to measure, improve and verify sustainability to lead the change while differentiating their products from the competition.

The BeCrop Rate utilizes BeCrop technology and scientific methodology to measure human intervention and empower nature inclusive landscapes.



BeCrop Rate Methodology

The BeCrop Rate metric offers an assessment of sustainability to farmland parcels once per year. It presents comparability across different farmlands independently of crops, farming practices or geographic location.

The outcome is a score card that provides an impact assessment of human intervention on agricultural lands and best management practices.

BeCrop Rate Levels						
	<div>D</div>	<div>C</div>	<div>B</div>	<div>A</div>	<div>A+</div>	<div>A++</div>
Human Intervention	Harmful	Intensive	Integrated	Balanced	Bio	Wild
Chemical	●	●	●			
Mechanical	●	●	●	●		
Crop Rotation	●	●	●	●		
Biological Inputs	●	●	●	●	●	
Encourage Cover Crops			●	●	●	
Integrated Livestock				●	●	●
ENERGY INTENSITY	VERY HIGH	VERY HIGH	HIGH	MEDIUM	LOW	VERY LOW

“BeCrop has helped check soil bioactivity allowing us to optimize our farming practices and increasing its resilience”

CEO of Renteria Vineyard Management



BeCrop Technology

The new standard in soil biology analysis

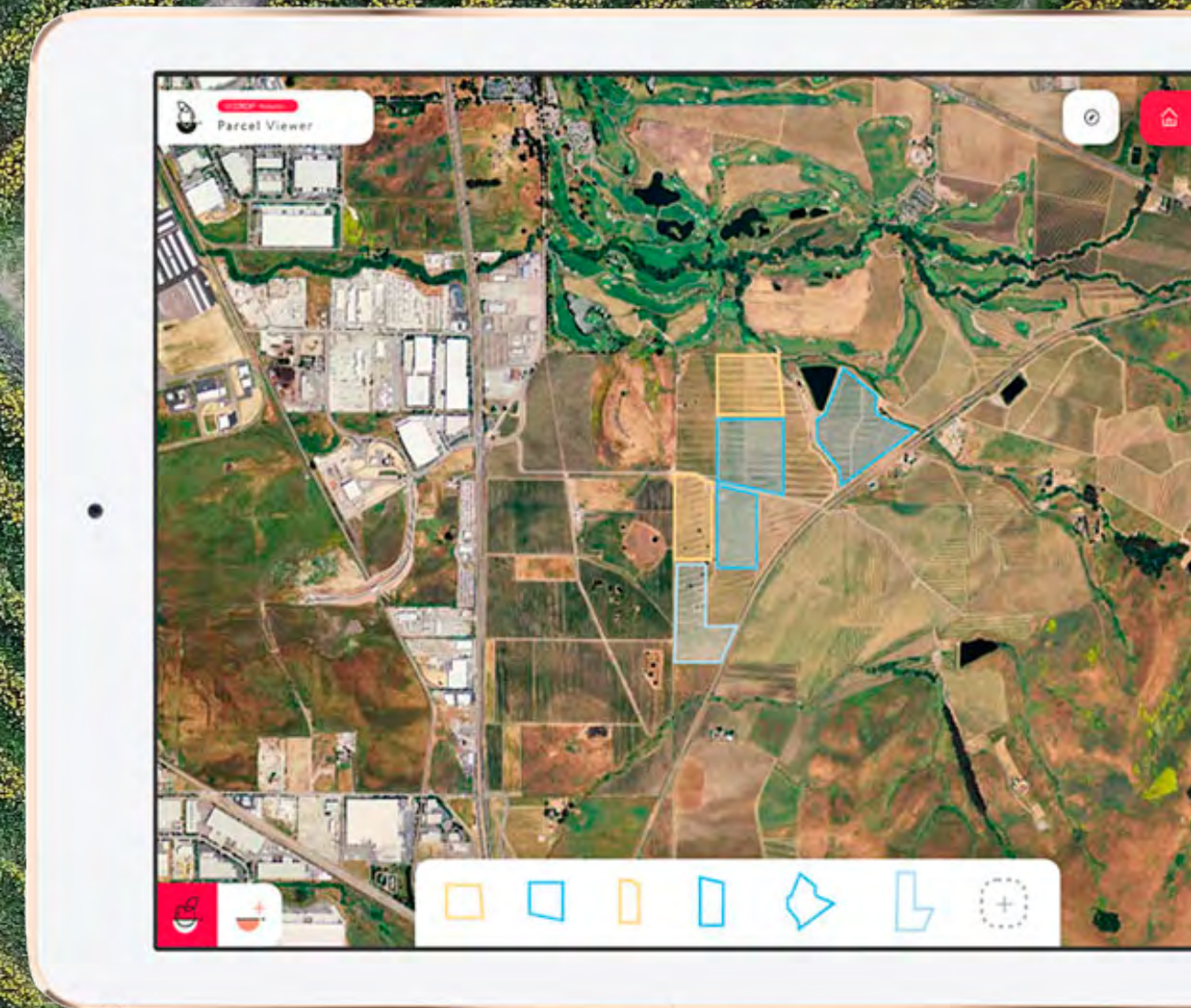
BeCrop uses advanced ecological computing to decode the soil microbial networks. The microbiome is a reliable biomarker to decode soil quality and functionality as it relates to crop health, nutrient cycling and more.

**7.7 M Biggest
Microorganism
Database**

**1200+
Users**

**Tech Used in
40+ Countries**

**Validated
by Top
Scientists**



”

“BeCrop technology was the missing piece for a sustainable management of our farm.”

Agronomist, Olive Farm

BeCrop Rate Impact

Farmers

- Profitability
- Verified Sustainability
- Carbon Credits



Food Operators

- Sustainability Validation
- Product Marketability
- Carbon Neutral



Customers

- Health Benefits
- Transparency
- Supporting Sustainability



Next Steps

Select farm & we take care of the rest!

Deliverables include:

- BeCrop Rate diploma
- Digital gateway (API) to connect BeCrop Rate datapoint blockchain traceability systems
- Marketing Package to promote your Rate





Get Started and Rate Your Farm Today!

www.biomemakers.com | Info@biomemakers.com